

Feather Real Estate Group, Inc.

RICE LAKE, WI COMMERCIAL LAND FOR SALE



\$149,900

- Two parcels adjacent to VA Outpatient Clinic
- Total 2.27 AC
- Zoned Commercial
- East portion ideal office building site
- 14,100 VPD Traffic on Highway O
- 2024 Real Estate Taxes \$1,449.72
- Price has been discounted for quick sale
-

320 CO ROAD O, RICE LAKE, WI 54868

Great office or retail store site located adjacent to the VA Outpatient Clinic (former Shopko Building). Lot 2 on the east side has 1.672 acres. Lot 3 on the west side is 0.599 acres. Both parcels are zoned commercial. The property is priced for quick sale in a market that has seen \$2.50 to \$9.00 square foot sale prices. Both parcels are being sold together. This is a well populated area of the city with big box retail, restaurants and office buildings.

Water and sewer is accessible to the east parcel. Only water is accessible to the parcel on the west .



CHARLES



KEVIN



3011 S. Main Street, Suite 4
Rice Lake, Wisconsin 54868
Office: 715.719.0880
Charles Direct: 715.308.6600
Kevin Direct: 715.523.1167
www.featherrealestategroup.com

Email: charles@featherrealestategroup.com
Web Site: www.featherrealestategroup.com

The Feather Family of Realtors have been providing professional representation to buyers, sellers, tenants and landlords since 1954. We would be honored to serve you too.

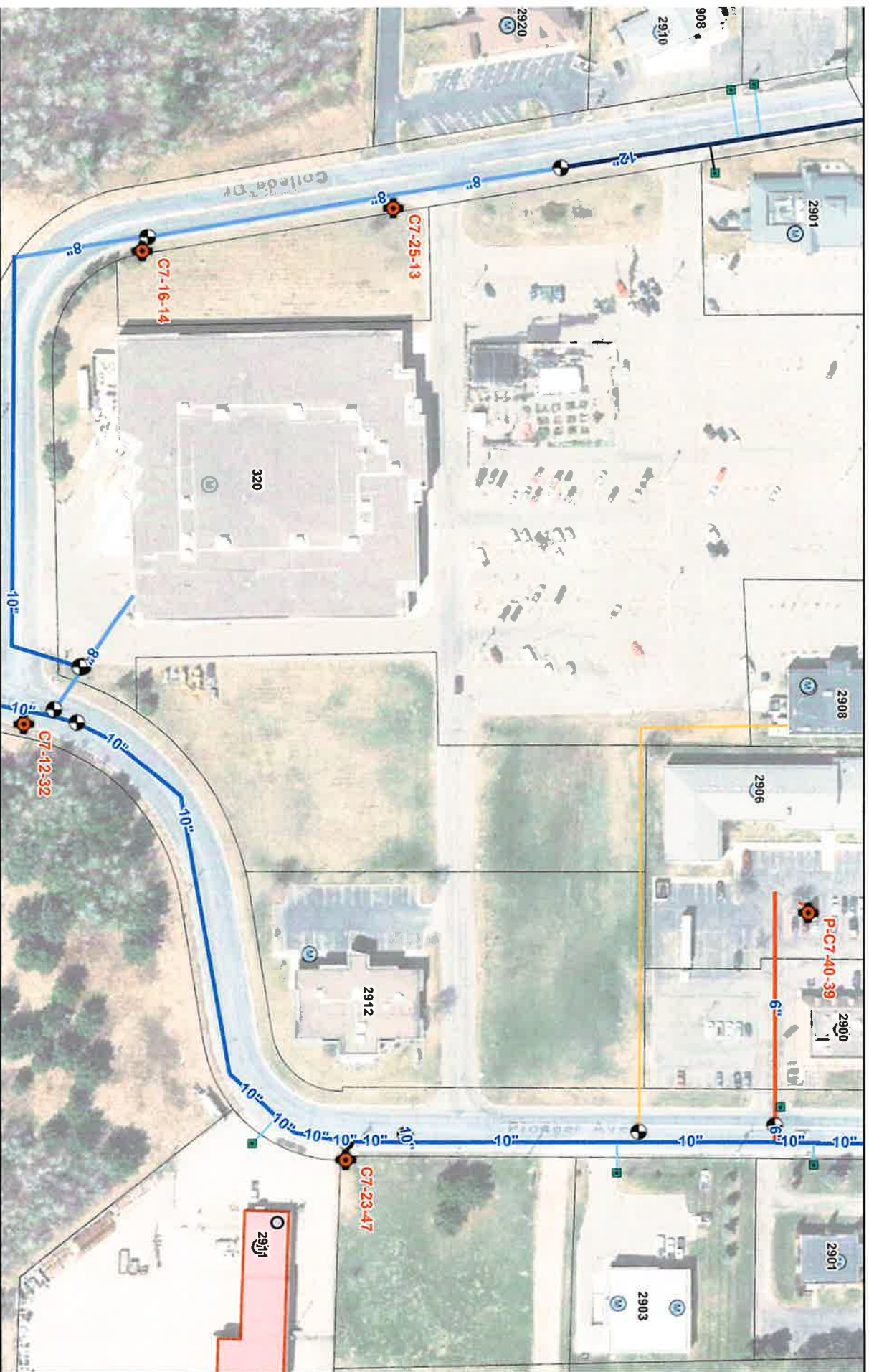


LOCAL TRADE AREA

FORMER SHOPKO | RICE LAKE, WI



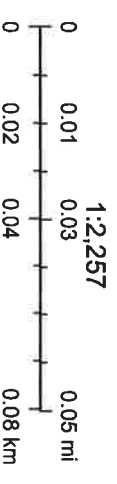
ArcGIS Web Map



/31/2022, 11:33:22 AM

3_co_6i.sld

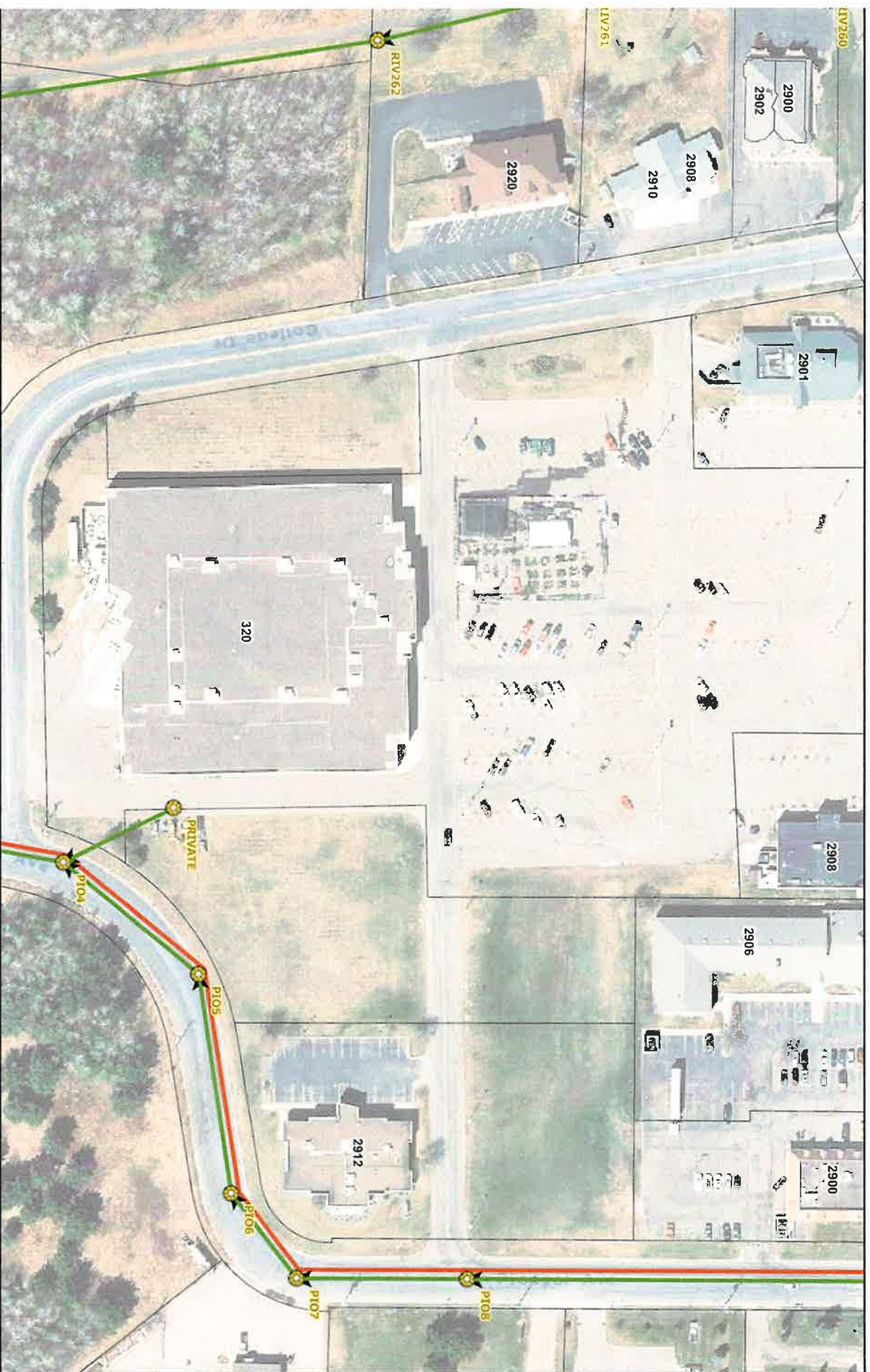
- Red: Band_1
- Green: Band_2
- Blue: Band_3



Sources: Esri, HERE, Garmin, USGS, Intermap, INCREMENT P, NRCan, Esri Japan, METI, Esri China (Hong Kong), Esri Korea, Esri (Thailand),

ArcGIS Web AppBuilder
Esri, HERE, Garmin, GeoTechnologies, Inc., NGA, USGS |

ArcGIS Web Map



3/31/2022, 11:36:36 AM

3_co_61.sid

Addresses

→ Sewer Flow Direction Arrows

Red: Band_1

Manholes

Force Mains

Green: Band_2

Gravity Mains

City of Rice Lake Municipal Boundary

Blue: Band_3

1:2,257

0 0.01 0.03 0.05 mi
0 0.02 0.04 0.08 km

Sources: Esri, HERE, Garmin, USGS, Intermap, INCREMENT P, NRCan, Esri Japan, METI, Esri China (Hong Kong), Esri Korea, Esri (Thailand),

ArcGIS Web AppBuilder
Esri, HERE, Garmin, GeoTechnologies, Inc., NGA, USGS |